



**Ocean View, Greystonelees Steading,
Eyemouth, TD14 5SZ**

doughtys w.s.

SOLICITORS & ESTATE AGENTS

**doughtys.co.uk
01890 751 100**



This property is a beautifully presented two storey semi detached villa, built in 2008.

The property comprises

GROUND FLOOR - Entrance Hall, Kitchen/Dining Room, Living Room, Utility Room and WC.

FIRST FLOOR - Landing, Master Bedroom with En-Suite Facility, Two Further Bedrooms and Bathroom with WC.

OUTSIDE- Garage, Parking for several cars and garden to front and rear.

Ocean View is set on the dramatic Berwickshire coastline and enjoys wonderful sea views and is an excellent location for discovering the delights of both the Scottish Borders and Northumberland. The fishing village of Bummouth lies just 1 mile distant, and Eyemouth, where visitors can feed wild seals, is 3.5 miles and the St Abb's Head nature reserve's spectacular clifftop walks are only 7 miles away.

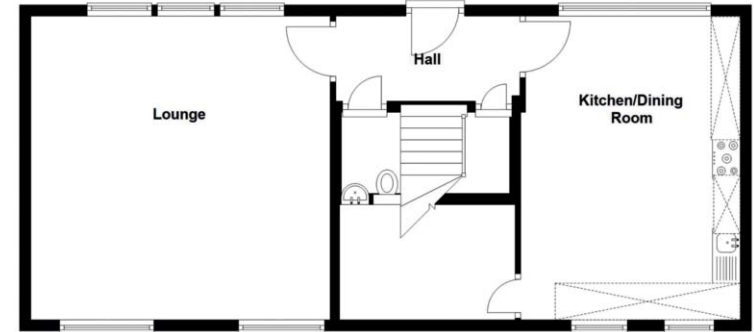
Eyemouth is well served with shops and local schools from nursery level to the newly built secondary school. There is an 18-hole golf course with spectacular views over the east coast, while the area is also very popular with sub-aqua divers.

The surrounding countryside is renowned for its outstanding natural beauty with rolling hills, plentiful farmland and the Berwickshire coastal walk.

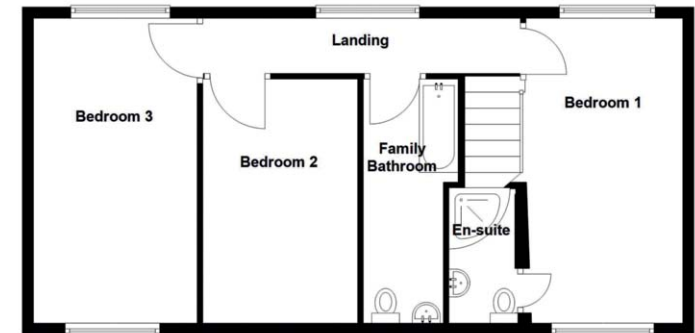
The A1 trunk road is within 2 miles of the town giving quick and easy access to Edinburgh and Newcastle, while Berwick-upon-Tweed, less than 10 miles away, offers a regular rail link to the north and south.

Ocean View is a quiet enclave with easy allocated parking as well as a detached garage that offers potential as a two floored games room or even as conversion into a self contained flat.

Ground Floor



First Floor



Ocean view, Greystonelees, Greystonelees